

AFERsmart is a multitherapeutic platform able to perform a variety of treatments to treat numerous diseases.

AFERsmart performs the following treatments :

- Therapeutic Plasma exchange
- Rheopheresis
  - Double filtration
  - Selective apheresis
  - Double filtration adsorption
- Hemoperfusion

Complete treatments directly on the blood or by treating the plasma coming from a centrifuge.

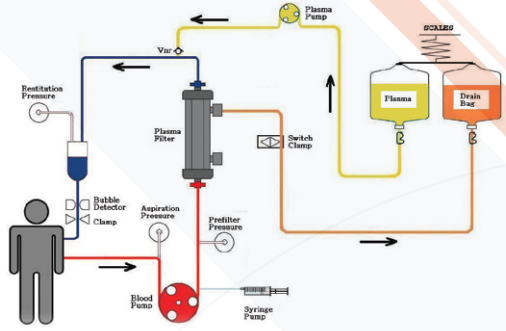
AFERsmart is a compact and complete, easy to use equipment:

- Only two pumps allow to move blood or plasma
- Two double clamp handle rapid cycles of regeneration of the fractionator filter fully automatically
- The management of the extraction of plasma is entrusted to a single clamp
- In plasmapheresis the control of the entire treatment is made according to the TMP pressure that monitors and automatically optimizes all flows making the treatment easy and secure.

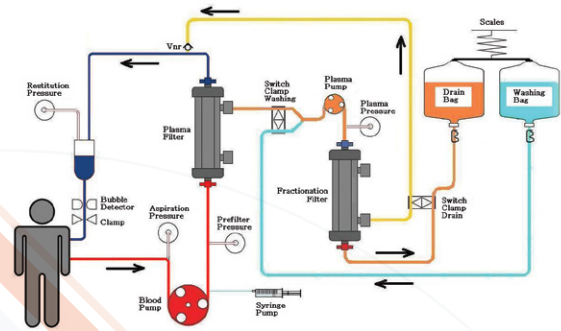
The simple and intuitive interface is based on a colour display complemented by a thumbwheel and only 3 buttons.



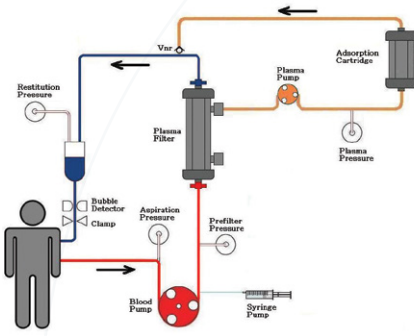
# AVAILABLE TREATMENTS



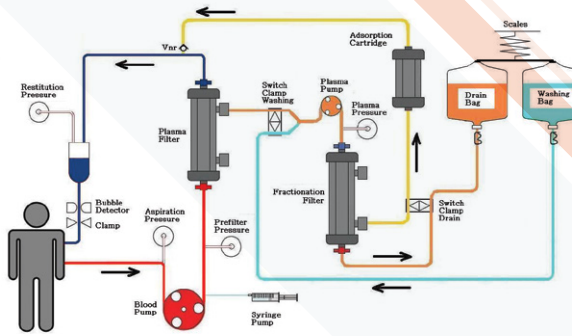
PLASMA EXCHANGE



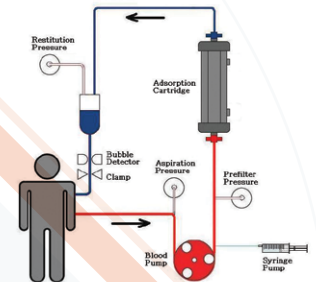
RHEOPHERESIS DOUBLE FILTRATION



RHEOPHERESIS SELECTIVE APHERESIS



RHEOPHERESIS DOUBLE FILTRATION ADSORPTION



HEMOPERFUSION

TECHNICAL DATA	
Class	1 tpe BF in accordance with IEC EN 60601-1 standard
Blood flow	Ranging from 5 to 250 ml / min - Resolution 5 ml / min (DF - DFA - SA - TPE - HP)
Plasma flow	Ranging from 1 to 30% of QB - Resolution 1 ml / min (DF - DFA - SA)
Infusion flow	Variable from 0 to Quf - Resolution 1 ml / min (TPE)
Priming Volume	1000 ml for TPE and SA treatments
	1600 ml for DF and DFA treatments
Syringe pump	Programmable priming volume for HP treatment
	Capacity 30 ml syringe
Aspiration pressure	Continuous infusion of 0.1 to 20 ml / h with steps every 30 "
	Bolus infusion in 0.1 to 5.0 ml with the period from 5 to 60 min
Restitution pressure	Range -300: +200 mmHg - 10 mmHg resolution Accuracy: ± 10 mmHg
Pre-filter pressure	Range -100: +400 mmHg - 10 mmHg resolution Accuracy: ± 10 mmHg
Plasma pressure	Range -100: +400 mmHg - 10 mmHg resolution Accuracy: ± 10 mmHg
Air detector	Ultrasound can detect bubbles > of 100 µl
Double clamps	Type of trapping
Fluid control	gravimetric balance, maximum 6.5 kg ± 1.5 gr
Display	Color Display 4.7 "
Parameter selection, start / stop, confirmation and silencing	Executable with wheel selector and 3 buttons
AFERsmart Product Code (230 V, 50-60 Hz)	M90022
AFERsmart Product Code (115 V, 60 Hz)	M90095

ELECTRICAL DATA	
Power supply / Frequency / Power adsorption	230 V (+/-10%), 50-60 Hz, 35 VA
	115 VAC (+/-10%), 60 Hz, 35 VA
DIMENSIONS AND WEIGHT	
Equipment Height	360 mm
Equipment Width	370 mm
Equipment Depth	290 mm
Equipment Weight	12 Kg
Trolley Height	930 mm
Trolley base	440x500 mm
Maximum height pole	1970 mm
Trolley weight	21 Kg
ENVIRONMENTAL WORKING CONDITIONS	
Temperature	Range 15 : 35 °C
Humidity	maximum 80% non-condensing
Atmospheric Pressure	Range 70 : 106 kPa
ENVIRONMENTAL TRANSPORT AND STORAGE CONDITIONS	
Temperature	Range -20 : +60 °C
Humidity	from 10 to 96% non condensing

## MANUFACTURER

MEDICA S.p.A. Via degli Artigiani, 7 | 41036, Medolla (Modena) Italia  
Tel: +39 0535 51159 | Fax: +39 0535 52605 | Email: info@medica.it | www.medica.it

# MEDICA



CE 0476 UNI EN ISO 9001:2015 UNI CEI EN ISO 13485:2016

0476